

POMPE AD INGRANAGGI FISSAGGIO 4 FORI-ISO

CODICE FAMIGLIA
FAMILY CODE

105-011

4 HOLES-ISO HYDRAULIC GEAR PUMPS

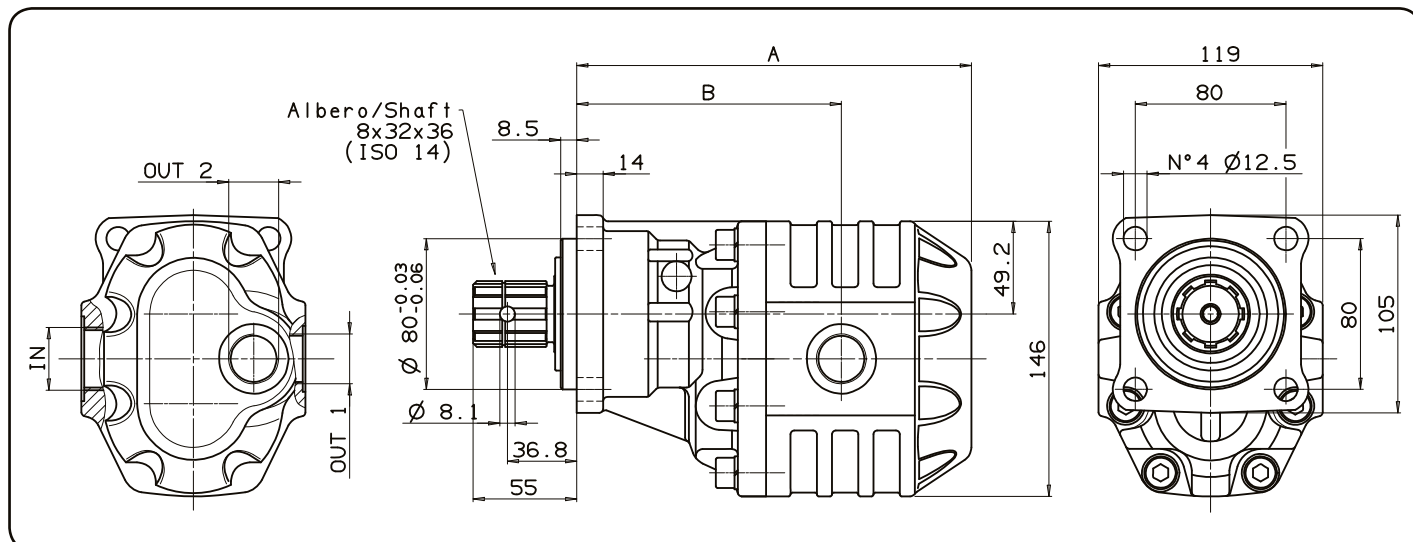
NPH ISO

Codice foglio: 997-105-01105 Rev: AC



Fluido idraulico Fluid	Minerale o sintetico compatibile con guarnizioni: Mineral or synthetic compatible with the following seals: NBR, FKM, FPM, Nylon				
Viscosità cinematica consigliata Kinematic viscosity suggested	T media ambiente (°C) Average ambient temp. (°C)	< -10	-10 ÷ 10	10 ÷ 35	> 35
	VG (cSt = mm ² /s)	22	32	46	68
Viscosità cinematica ottimale di esercizio Optimale kinematic viscosity			VG = 10 cSt ÷ 100 cSt		
Viscosità cinematica max consentita all'avviamento Max kinematic viscosity suggested at the start-up			VG = 750 cSt		
Indice di viscosità consigliato Viscosity index suggested	VI > 100	Temperatura di esercizio Working temperature -15°C +100°C			
Grado di filtrazione Oil filtering		> 200 bar: 10 µm < 200 bar: 25 µm			
Pressione di aspirazione Inlet pressure		-0,3 ÷ 2 bar			
Senso di rotazione Pump rotation		Unidirezionale (DX o SX) Unidirectional (Right or Left)			

Codice fascicolo: 997-400-10510 Rev: AT



Data: Lunedì 12 aprile 2010

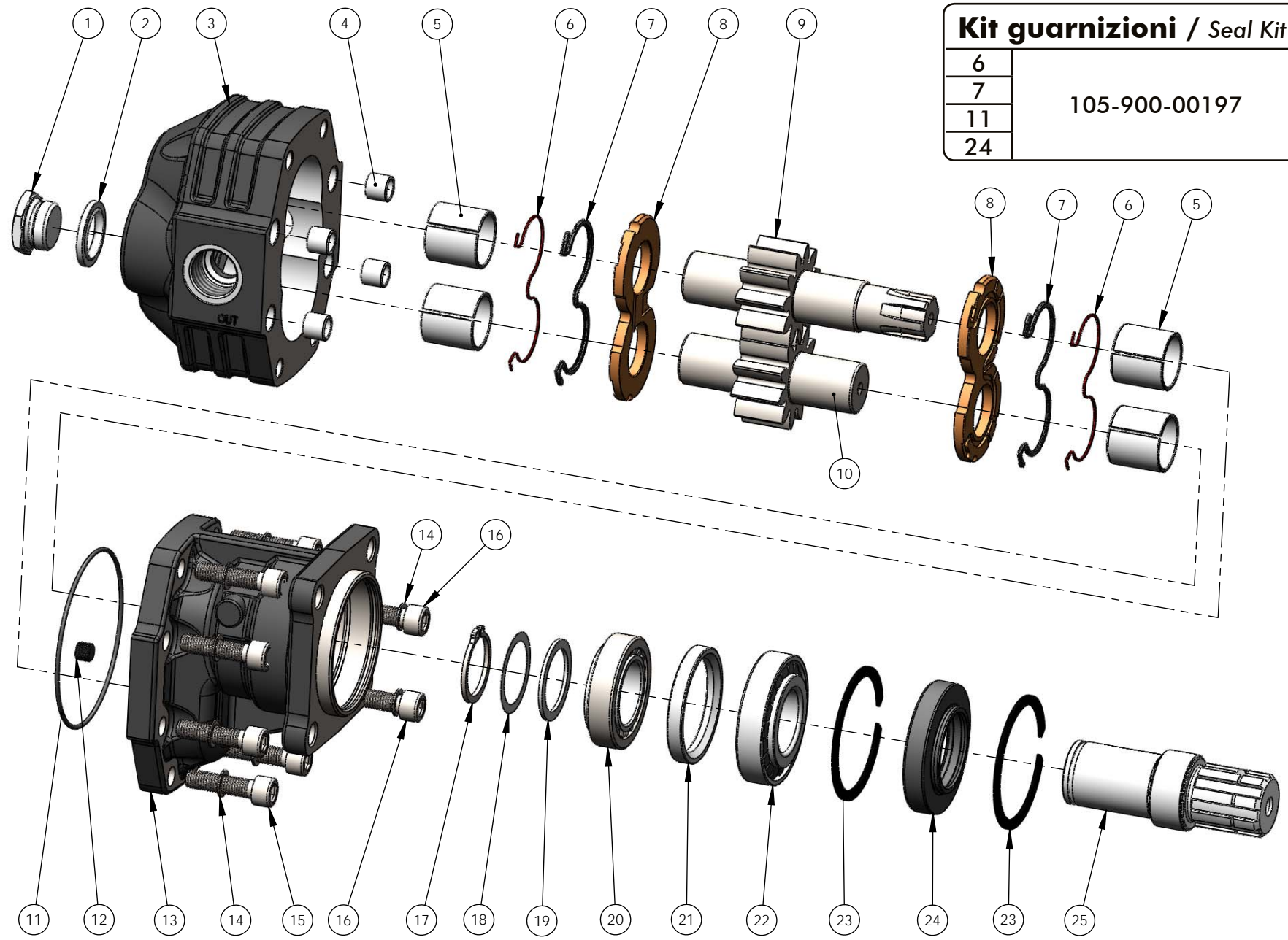
Tipo pompa Pump type	Rotazione Rotation		IN	OUT 1	OUT 2	A	B	Peso Weight
	Destra Right	Sinistra Left						
NPH-17	105-011-10173	105-011-10182	ISO 228	ISO 228	ISO 228	mm	mm	Kg
NPH-22	105-011-10226	105-011-10235	G 1/2	G 1/2		168.5	119.5	11
NPH-27	105-011-10271	105-011-10280				172	121.5	11.5
NPH-34	105-011-10342	105-011-10351	G 3/4	G 3/4		174.5	124	12
NPH-43	105-011-10431	105-011-10441				179.5	125	13
NPH-51	105-011-10511	105-011-10520	G 1	G 3/4		185.5	130	13.5
NPH-61	105-011-10619	105-011-10628				190.5	130.5	14
NPH-73	105-011-10735	105-011-10744	G 1	G 3/4		196.5	136.5	14.5
NPH-82	105-011-10824	105-011-10833				204.5	135.5	15
NPH-100	105-011-11001	105-011-11010	G 1 1/4	G 1 G 3/4		209.5	140.5	15.5
NPH-125	105-011-11252	105-011-11261				226.5	154.5	15
						242.5	158.5	17

pag.21

O.M.F.B. S.p.A. Hydraulic Components
We reserve the right to make any changes without notice.
Edition 2003.03 No reproduction, however partial, is permitted.
Via Cave, 7/9 25050 Provaglio d'Iseo (Brescia) Italy Tel.: +39.030.9830611
Fax: +39.030.9839207-208 Internet: www.omfb.it e-mail: info@omfb.it

COMPANY
WITH QUALITY SYSTEM
CERTIFIED BY DNV
=ISO 9001/2000=

Kit guarnizioni / Seal Kit	
6	105-900-00197
7	
11	
24	



COMPANY
WITH QUALITY SYSTEM
CERTIFIED BY DNV
= ISO 9001/2000 =

O.M.F.B. S.p.A. Hydraulic Components
We reserve the right to make any changes without notice.
Edition: 2003.03 No reproduction, however partial, is permitted.
Via Cove, 7/9 25050 Prosecco d'Isone (Brescia) Italy tel.: +39 030.9830611
Fax: +39 030.9839207-208 Internet: www.omfb.it e-mail: info@omfb.it

pag. 22





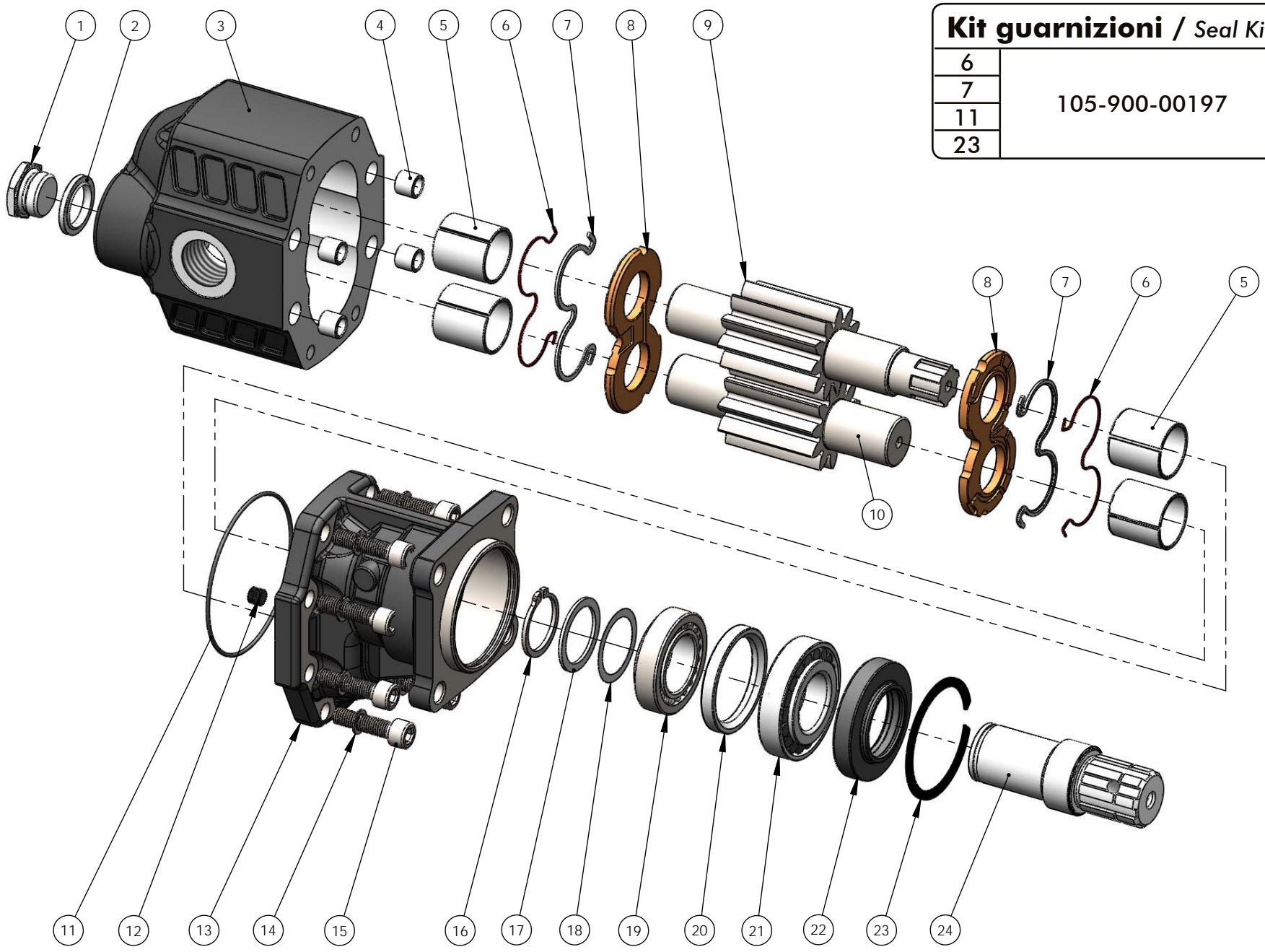
O.M.F.B. S.p.A. Hydraulic Components
 We reserve the right to make any changes without notice.
 Edition 2003.03 No reproduction, however partial, is permitted.
 Via Cave, 7/9 25050 Poggio di Iseo (Brescia) Italy Tel.: +39.030.9830611
 Fax: +39.030.9839207-208 Internet:www.omfb.it e-mail:info@omfb.it

pag.23

COMPANY
 WITH QUALITY SYSTEM
 CERTIFIED BY DNV
 ISO 9001/2000

N° N°	17	22	27	34	43	51	61	73	82	Codice P. Number	Descrizione Description	Quantità Quantity	
1	540-002-00110	Tappo Acciaio 1/2"	Steel plug 1/2"	1
										540-002-00129	Tappo Acciaio 3/4"	Steel plug 3/4"	
2	116-009-10129	Rondella acciaio-gomma 1/2"	Steel-rubber washer 1/2"	1
										116-009-10343	Rondella acciaio-gomma 3/4"	Steel-rubber washer 3/4"	
3	517-010-00173	Corpo pompa	Gear housing	1
										517-010-00226			
										517-010-00271			
										517-010-00342			
										517-010-00431			
										517-010-00511			
										517-010-00619			
										517-010-00717			
									517-010-00824				
4	501-003-00282	Spine forate di centraggio 14x12.5	Pins 14x12.5	4
5	533-004-00033	Boccola autolub. 28x32x30	Bushing 28x32x30	4
6	506-000-01097	Guarnizione antiestrusione	Back-up ring	2
7	506-000-01088	Guarnizione per rasamento	Thrust plate seal	2
8	510-010-00106	Rasamento ad occhiale	Thrust plate	2
										523-020-00178			
9	523-020-00221	Albero dentato conduttore	Drive shaft	1
										523-020-00276			
										523-020-00347			
										523-020-00436			
										523-020-00516			
										523-020-00614			
										523-020-00712			
										523-020-00829			
10	523-021-00177	Albero dentato condotto	Driven shaft	1
										523-021-00220			
										523-021-00275			
										523-021-00346			
										523-021-00435			
										523-021-00515			
										523-021-00613			
										523-021-00711			
									523-021-00828				
11	506-000-01579	Guarnizione OR (2x95)	O-ring (2x95)	1
12	504-010-00063	Grano conico 1/8"	Plug 1/8"	1
13	518-003-00116	Coperchio anteriore	Mounting cover	1
14	501-020-00101	Rondella elastica	Washer	8
15	502-004-00574	Vite TCE M10x40	Screw M10x40	8
												6	
16	502-004-00565	Vite TCE M10x35	Screw M10x35	2
17	501-000-01355	Anello seeger	Seeger ring	1
18	529-007-00226	Rondella speciale 45x35x0,2	Special washer 45x35x0,2	1
19	529-007-00208	Rondella speciale 45x35x2	Special washer 45x35x2	1
20	510-002-00202	Cuscinetto a rulli conici 35x62x18	Tapered roller bearing 35x62x18	1
21	530-004-00164	Distanziale 52x64,2x8,25	Spacer 52x64,2x8,25	1
22	510-002-00211	Cuscinetto a rulli conici 35x72x18,25	Tapered roller bearing 35x62x18	1
23	501-000-02729	Anello elastico	Circlip	2
24	506-008-42723	Guarnizione paraolio	Oil seal	1
25	114-005-00147	Manicotto	Coupling	1

Kit guarnizioni / Seal Kit	
6	105-900-00197
7	
11	
23	



COMPANY
WITH QUALITY SYSTEM
CERTIFIED BY DNV
= ISO 9001/2000 =

pag. 24
O.M.F.B. S.p.A. Hydraulic Components
We reserve the right to make any changes without notice.
Edition: 2003.03 No reproduction, however partial, is permitted.
Via Cove, 7/9 25050 Pionaglia d'Isco (Brescia) Italy / tel.: +39 030 9830611
Fax: +39 030 9839207-208 Internet: www.omfb.it e-mail: info@omfb.it





O.M.F.B. S.p.A. Hydraulic Components
 We reserve the right to make any changes without notice.
 Edition 2003.03 No reproduction, however partial, is permitted.
 Via Cave, 7/9 25050 Poggio di Seo (Brescia) Italy Tel.: +39.030.9830611
 Fax: +39.030.9839207-208 Internet:www.omfb.it e-mail:info@omfb.it

pag.25

COMPANY
 WITH QUALITY SYSTEM
 CERTIFIED BY DNV
 ISO 9001/2000

N° N°	100	125	Codice P. Number	Descrizione Description		Quantità Quantity
1	•	•	540-002-00129	Tappo Acciaio 3/4"	Steel plug 3/4"	1
2	•	•	116-009-10343	Rondella acciaio-gomma 3/4"	Steel-rubber washer 3/4"	1
3	•	•	517-010-00995	Corpo pompa	Gear housing	1
			517-010-01252			
4	•	•	501-003-00282	Spine forate di centraggio 14x12.5	Pins 14x12.5	4
5	•	•	533-004-00060	Boccola autolub. 30x34x35	Bushing 30x34x35	4
6	•	•	506-000-01284	Guarnizione antiestrusione	Back-up ring	2
7	•	•	506-000-01275	Guarnizione per rasamento	Thrust plate seal	2
8	•	•	510-010-00106	Rasamento ad occhiale	Thrust plate	2
9	•	•	523-023-01003	Albero dentato conduttore	Drive shaft	1
			523-023-01254			
10	•	•	523-023-01012	Albero dentato condotto	Driven shaft	1
			523-023-01263			
11	•	•	506-000-01579	Guarnizione OR (2x95)	O-ring (2x95)	1
12	•	•	504-010-00063	Grano conico 1/8"	Plug 1/8"	1
13	•	•	518-003-00152	Coperchio anteriore	Mounting cover	1
14	•	•	501-020-00101	Rondella elastica	Washer	8
15	•	•	502-004-00574	Vite TCE M10x40	Screw M10x40	8
16	•	•	501-000-01355	Anello seeger	Seeger ring	1
17	•	•	529-007-00226	Rondella speciale 45x35x0,,2	Special washer 45x35x0,2	1
18	•	•	529-007-00208	Rondella speciale 45x35x2	Special washer 45x35x2	1
19	•	•	510-002-00202	Cuscinetto a rulli conici 35x62x18	Tapered roller bearing 35x62x18	1
20	•	•	530-004-00164	Distanziale 52x64,2x8,25	Spacer 52x64,2x8,25	1
21	•	•	510-002-00211	Cuscinetto a rulli conici 35x72x18,25	Tapered roller bearing 35x72x18,25	1
22	•	•	501-000-02729	Anello elastico	Circlip	2
23	•	•	506-008-42723	Guarnizione paraolio	Oil seal	1
24	•	•	114-005-00147	Manicotto	Coupling	1

CARATTERISTICHE TECNICHE DI FUNZIONAMENTO**TECHNICAL FEATURES**

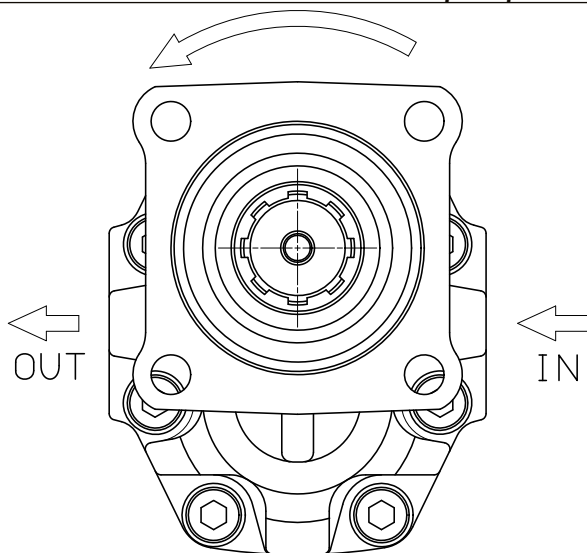
Tipo pompa Pump type	Cilindrata Displacement cm ³ /rev	Pressione Pressure			Velocità max. continua Max. continuous speed rpm	Velocità max. intermittente Max. intermittent speed rpm	Velocità min. Min. speed rpm
		P1 bar	P2 bar	P3 bar			
NPH-17	17.04	290	315	325	2500	3000	300
NPH-22	22.15						
NPH-27	26.18						
NPH-34	33.88	280	300	310	2200	2800	
NPH-43	43.12	270	290	300	2000	2500	
NPH-51	50.82	240	260	280			
NPH-61	60.06	220	240	250	1800	2000	
NPH-73	72.88	200	220	230	1600	1800	
NPH-82	81.08	190	210	220	1500		
NPH-100	98.18	180	200				
NPH-125	122.72	160	180	200			

P1=Pressione max.continua
P2=Pressione max. intermittente
P3=Pressione max. di punta

Max. continuous pressure (100%)
Max. Intermittent pressure (20 sec.max.)
Max. peak pressure (6 sec.max)

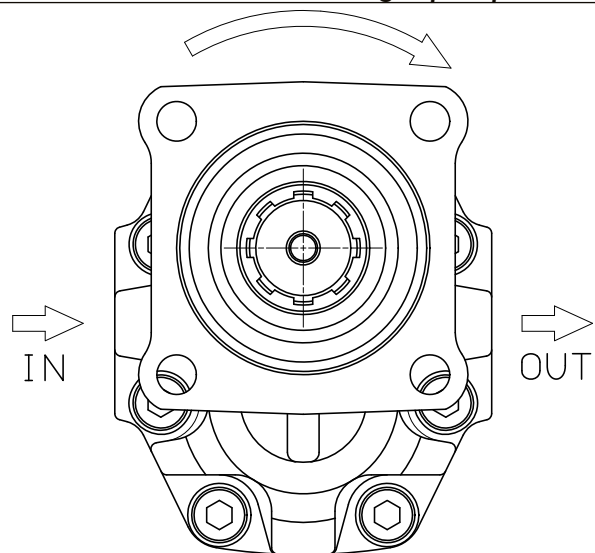
SENSO DI ROTAZIONE POMPA:**DIRECTION OF ROTATION:**

Rotazione antioraria, pompa sinistra
Anti-clockwise rotation, left pump



Vista FRONTALE
FRONT

Rotazione oraria, pompa destra
Clockwise rotation, right pump



Vista FRONTALE
FRONT

PER MODIFICARE IL SENSO DI ROTAZIONE VEDERE ISTRUZ. 997-2-42

TO CHANGE THE DIRECTION OF ROTATION SEE INSTRUCTION 997-2-42

LA POMPA E' MUNITA DI PARAOLIO BIDIREZIONALE E DI CUSCINETTI A RULLI CONICI SULL'ALBERO DI USCITA
THE PUMP IS COMPLETE WITH DOUBLE OIL-SEAL AND TAPERED ROLLER BEARING ON THE OUTPUT SHAFT